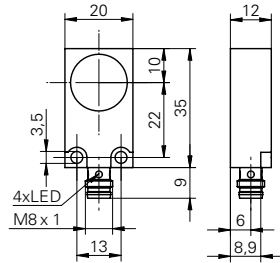


## Capacitive proximity sensors

## CFDM 20

## sample drawing



## general data

mounting type	shielded
nominal sensing distance $S_n$	5 mm
temperature drift	$\pm 15\%$ (+10 ... +70 °C)
sensitivity adjustment	no
output indicator	4 port LED

## electrical data

voltage supply range +Vs	10 ... 30 VDC
current consumption max.	20 mA
output current	< 200 mA
voltage drop Vd	< 1,5 VDC
switching frequency	< 50 Hz
short circuit protection	yes
reverse polarity protection	yes

## mechanical data

type	rectangular
housing material	brass nickel plated
dimension	20 mm
housing length	35 mm
connection types	connector M8

## ambient conditions

operating temperature	-25 ... +75 °C
protection class	IP 65

## order reference

<b>CFDM 20N1500/S35L</b>	NPN make function (NO)
<b>CFDM 20N3500/S35L</b>	NPN break function (NC)
<b>CFDM 20P1500/S35L</b>	PNP make function (NO)
<b>CFDM 20P3500/S35L</b>	PNP break function (NC)

## output circuit

## sample picture

